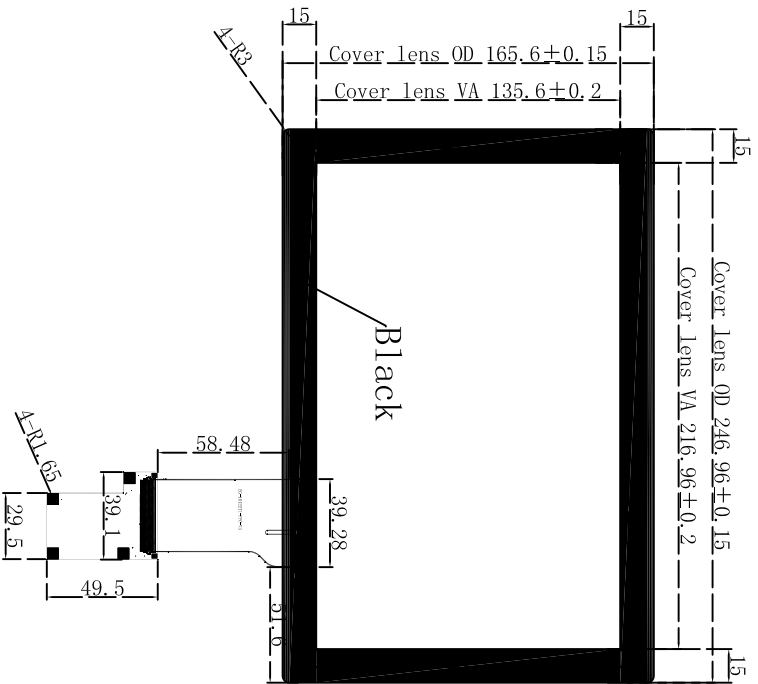
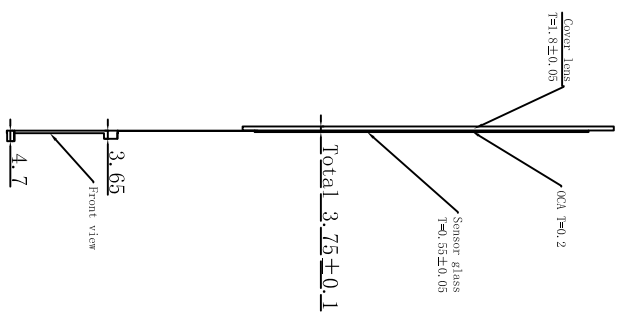


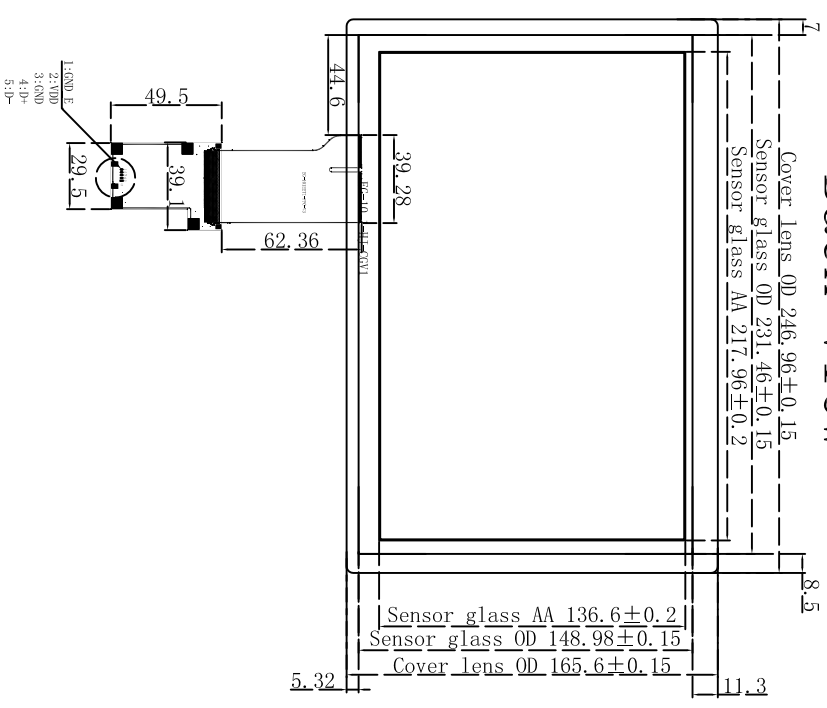
Front view



Side view



Back view



Technical Parameters

0: Interface : USB

- 1: Touch point: 10
- 2: Cover lens + Sensor glass + OCA+PPC
- 3: Cover lens Thickness = 2.8mm
- 4: Sensor glass Thickness = 0.55mm
- 5: OCA Thickness = 0.2mm
- 6: Total Thickness = 3.75mm
- 7: Sensor Process: Print Process (ITO Pattern+Metal line)
- 8: Input Voltage 3.5V ~ 5.5V. Typical 5V
- 9: Transmittance: >85%
- 10: Surface Hardness: >6H
- 11: Operating Conditions : -10 to 70 °C
- 12: Storage Conditions : -20 to 70 °C
- 13: Relative Humidity: 95% at 60°C, RH Non-condensing
- 14: Dimension tolerance: ±0.2mm

		Alltouch Solution BV	
Drawing By	01	Materials	Glass
Checked By		Scale	1:1
Approved By		Units	mm
		Page 1 of 1	Drawing Name
			10.1 CTP
			Drawing No.
			EG-10.1-004-V1

